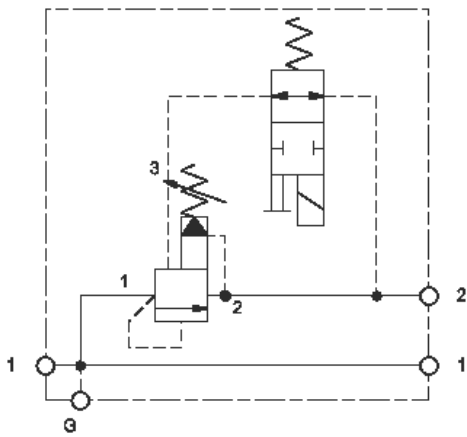
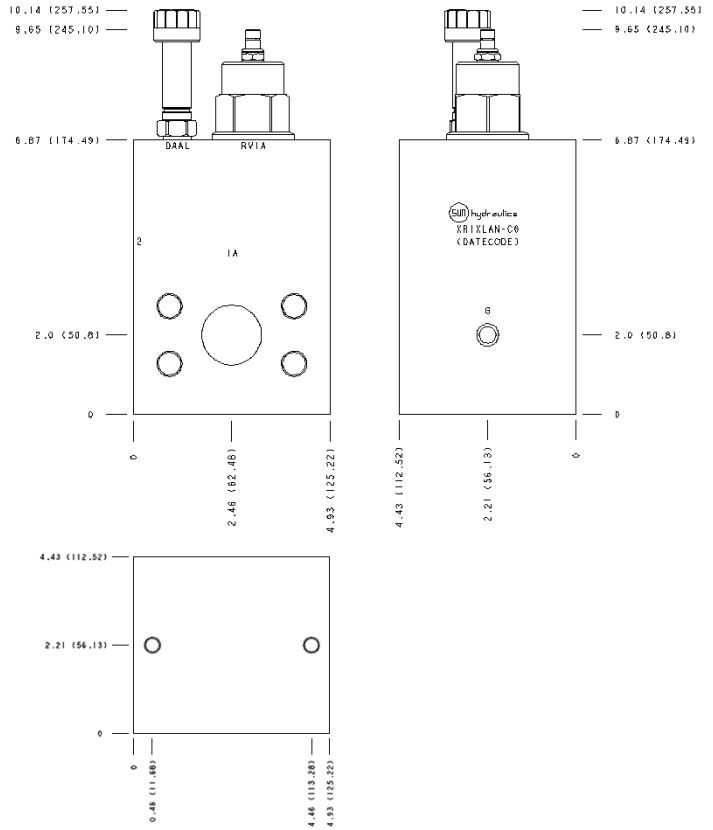


Normally Closed



Normally Open



TECHNICAL DATA NOTE: DATA MAY VARY BY CONFIGURATION. SEE CONFIGURATION SECTION.

	480 L/min.

OPTION SELECTION EXAMPLE: XRIXLANF6

(L) (A) (N)

L	A	100 - 3000 psi (7 - 210 bar), 1000 psi (70 bar)	N
C	B	50 - 1500 psi (3,5 - 105 bar), 1000 psi (70 bar)	V
	C	150 - 6000 psi (10,5 - 420 bar), 1000 psi (70 bar)	
	D	25 - 800 psi (1,7 - 55 bar), 400 psi (28 bar)	
	E	25 - 400 psi (1,7 - 28 bar), 200 psi (14 bar)	
	N	60 - 800 psi (4 - 55 bar), 400 psi (28 bar)	
	W	150 - 4500 psi (10,5 - 315 bar), 1000 psi (70 bar)	

INCLUDED COMPONENTS

Part	Description	Quantity
DTAFMHN	Cartridge	1
RVIALAN	Cartridge - Primary	1